

# BROADCAST 3G/HD/SD CLEAN ROUTER

## APPLICATIONS

- Small-budget studios
- Sport arenas video cubes
- Mobile units
- Studio main switchers

## FEATURES

- Configurable matrix size
- **“Clean”** output with DSK
- Clean switching at the Program output
- Optional **multiviewer**
- Optical **SFP** I/O

## TECH SPECIFICATIONS

### Interfaces

Video I/O 75 Ohm BNC  
3G/HD/SD SDI support  
Reclocking

### Video SFP

Optical output power 0~+3dBm  
Optical input sensitivity -3~-23dBm  
CWDM, DWDM wavelengths support

### CSW capabilities

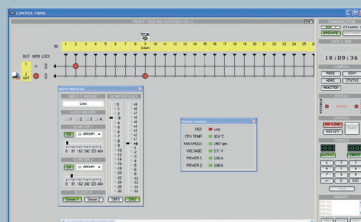
DSK inputs, one/two KEY, FILL pairs  
(assignable) synchronous to REF  
One/two assignable program  
output(s)

Optional MTV (four-input multiviewer)

Monitor SDI output for MTV

### REF input

## SOFTWARE CONTROL PANEL



- ▶ FLEXIBLE I/O CONFIGURATION
- ▶ TWO «CLEAN» OUTPUTS
- ▶ BUILT-IN DSK
- ▶ BUILT-IN MULTIVIEWER
- ▶ 3G-SDI CAPABILITY



**CHAMELEON** series — a set of adaptable broadcast 3G-SDI routers with coaxial and fiber I/O, built-in multiviewer and «clean» outputs.

Broadcast **SDI** routers with 17 or 33 I/O ports.

PVIO-X32EF features electrical and optical interfaces.

User-selectable matrix configuration from 4-by-29 to 31-by-2.

CSW («clean») program output option for **seamless switching** of asynchronous sources. Option also provide DSK with FILL and Key inputs.

Integrated **multiviewer** (MTV option) has four independent 3G-SDI inputs that work with all SD, HD, 3G formats.

## ORDERING INFO

**PVIO-X16E** 17 video I/O (2 outputs, 4 inputs, 11 universal)

**PVIO-X32E** 33 video I/O (2 outputs, 4 inputs, 27 universal)

**PVIO-X32EF** 33 video I/O, 17 electrical (2 outputs, 4 inputs, 11 universal) and 16 optical (as 8 SFP slots)

## HARDWARE OPTIONS

**CSW** – «clean» output option (up to 2)

**MTW** – MTV output option (up to 2)

**L** – local control panel